

# EASYTRAK QUALITY SERVICE

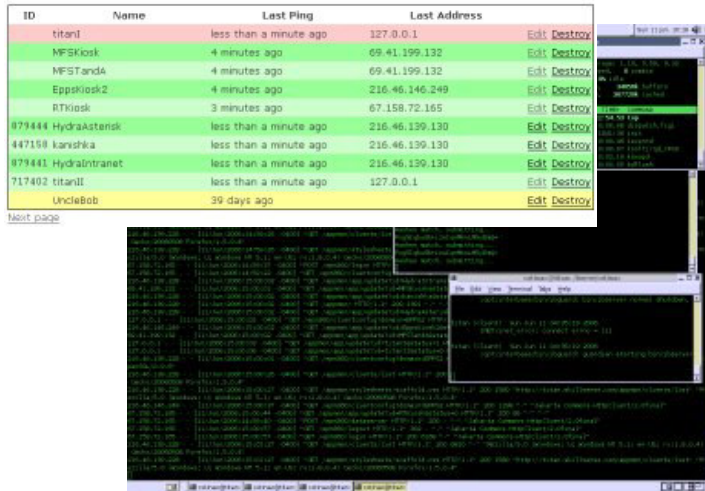
## WORRY-FREE TIME TRACKING SERVICE!

EasyTrak Quality Service helps you to track employee time and job progress quickly and reliably, eliminating the time and capital cost of purchasing, configuring and maintaining new technical equipment.

When you join the EasyTrak Quality Service program, SSI technicians will set up and configure one or more brand new kiosks for your hourly employees to use. Each kiosk can be interfaced to your existing systems to automatically update job charge codes, employees, etc. every few minutes. SSI technicians also take care of all the operation, maintenance and if necessary repair of the system - all within the fixed monthly fee.

Using the EasyTrak Quality Service to monitor and report on employee time and job charges is as easy as browsing to a secure web page. SSI provides an on-site orientation and training program for your Supervisors. Hourly employees are given a brief training demonstration at the start or end of shift.

By using state-of-the-art monitoring and operational analysis, SSI technicians can remotely monitor the performance and operation of the EasyTrak Quality Service. Any adjustments can usually be carried out remotely and overnight. This 'always on' proactive



Continuous monitoring ensures Quality and Reliability

support gives you the peace of mind of knowing skilled technicians are constantly monitoring the operation of your service, and releases your time to focus on the operation of *your* business.

### Service Quality

We work hard to bring you a high-quality EasyTrak service, and continuously measure how well we are doing. From 24-7-365 monitoring to millisecond response time measurement to business logic accuracy we track the numbers that prove the quality of our service.

### Getting Started

EasyTrak Service is based on a single monthly fee with no hidden extras or charges. Getting started is easy and requires only a one-month deposit, with monthly in advance billing.

Simple Reliable Service